



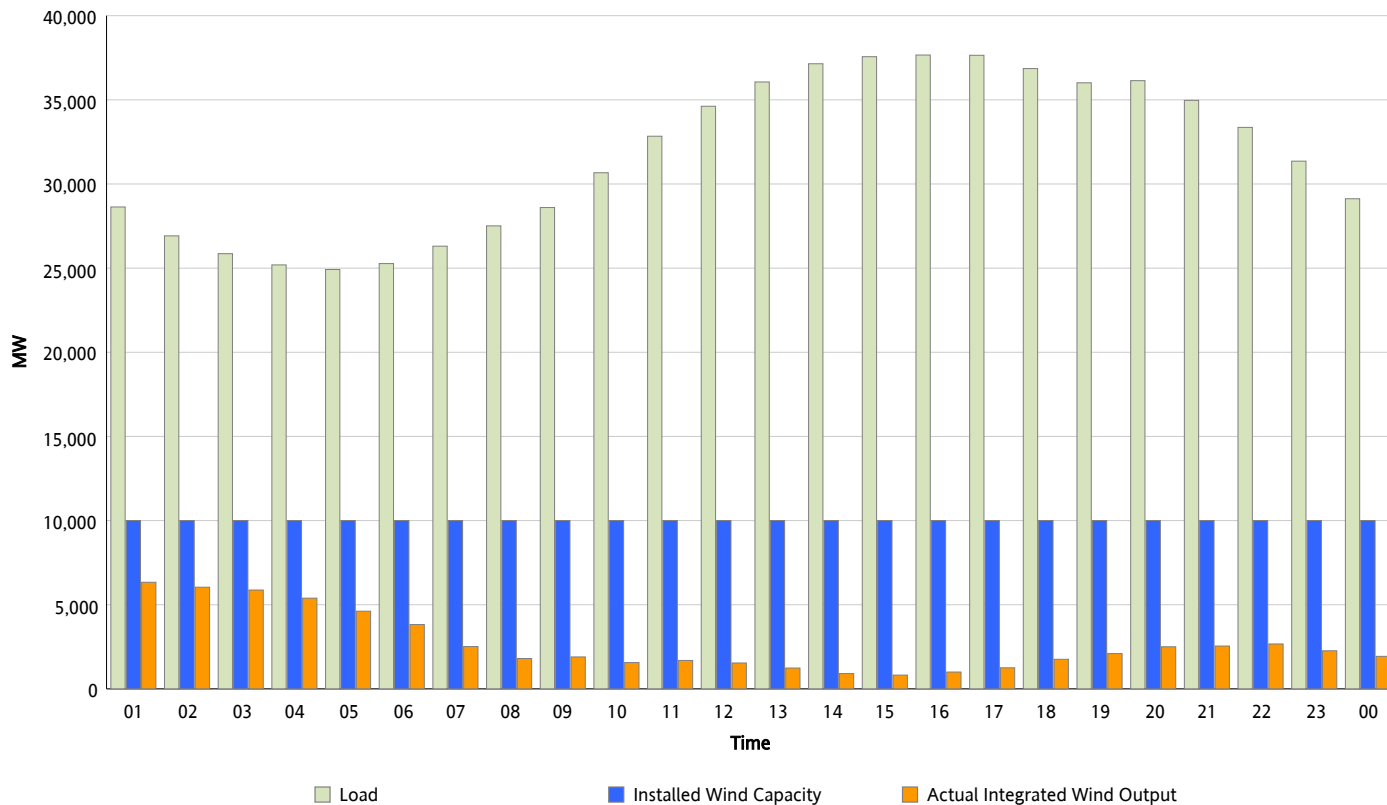
ERCOT Grid Operations

Wind Integration Report : 11/03/2012

Peak Load	37,664 MW
Load Peak Hour (HE)	16
Wind Over Peak	1,000 MW
Wind Record 06/19/12	8,368 MW
Max Wind Value*	6,427 MW
Wind Peak Time	00:14
Wind Integration %	22.06 %

Hourly Average Actual Load vs. Actual Wind Output

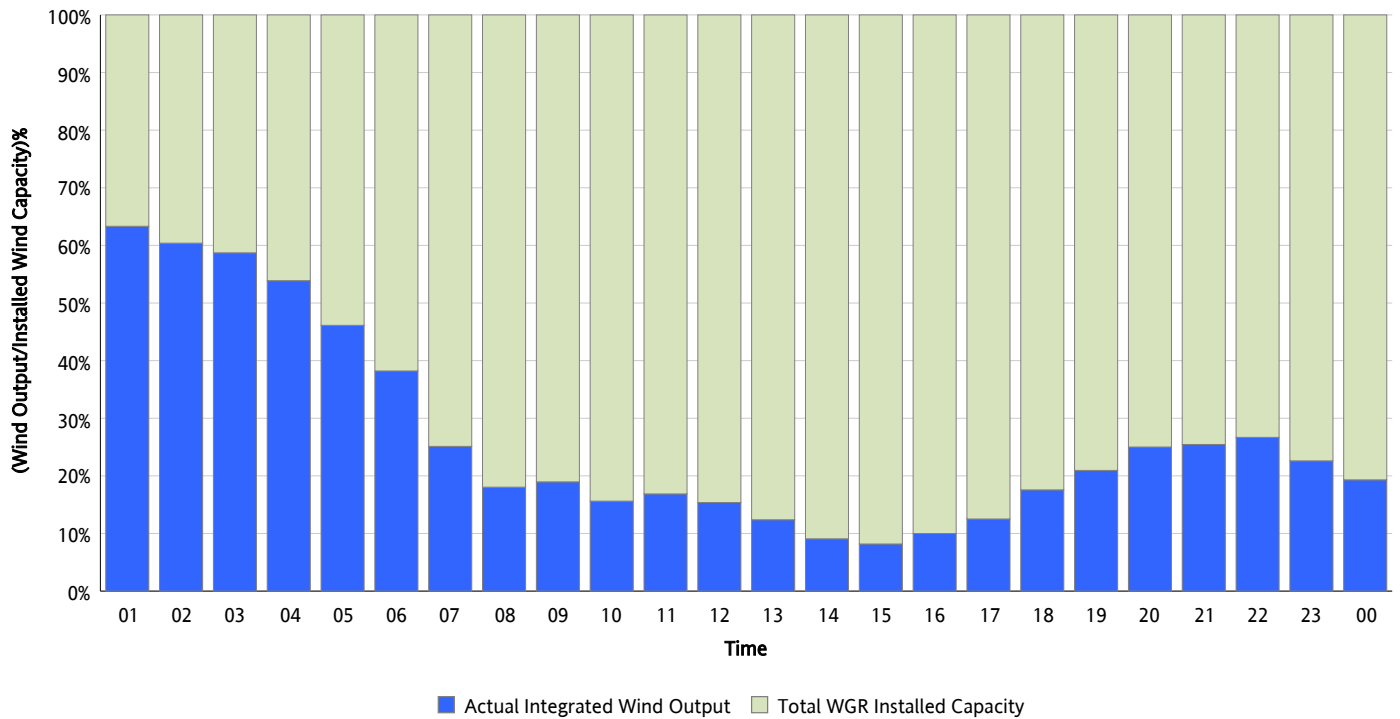
11/03/2012



* Wind Record and Wind Max represent instantaneous values and the rest of the values are integrated over the hour

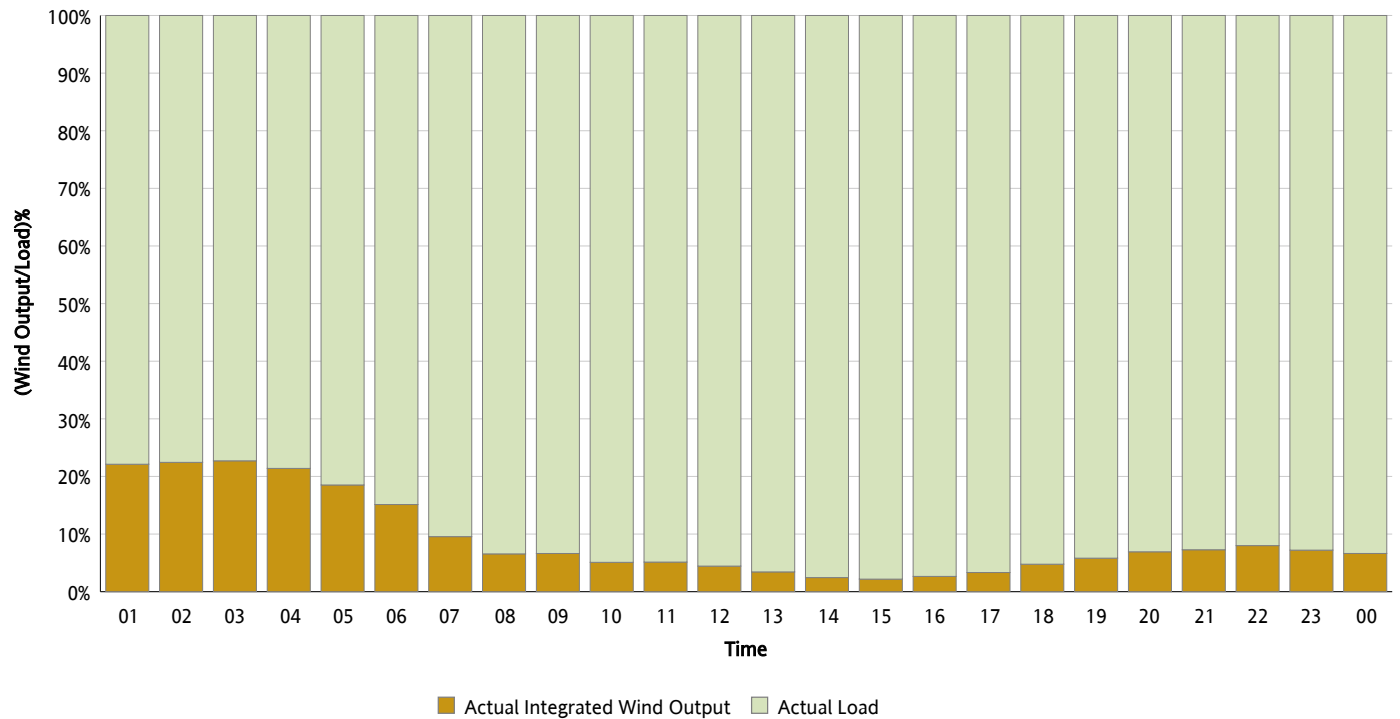
Actual Wind Output as a Percentage of the Total Installed Wind Capacity

11/03/2012



Actual Wind Output as a Percentage of the ERCOT Load

11/03/2012



ERCOT Load vs. Actual Wind Output

10/27/2012 - 11/03/2012

